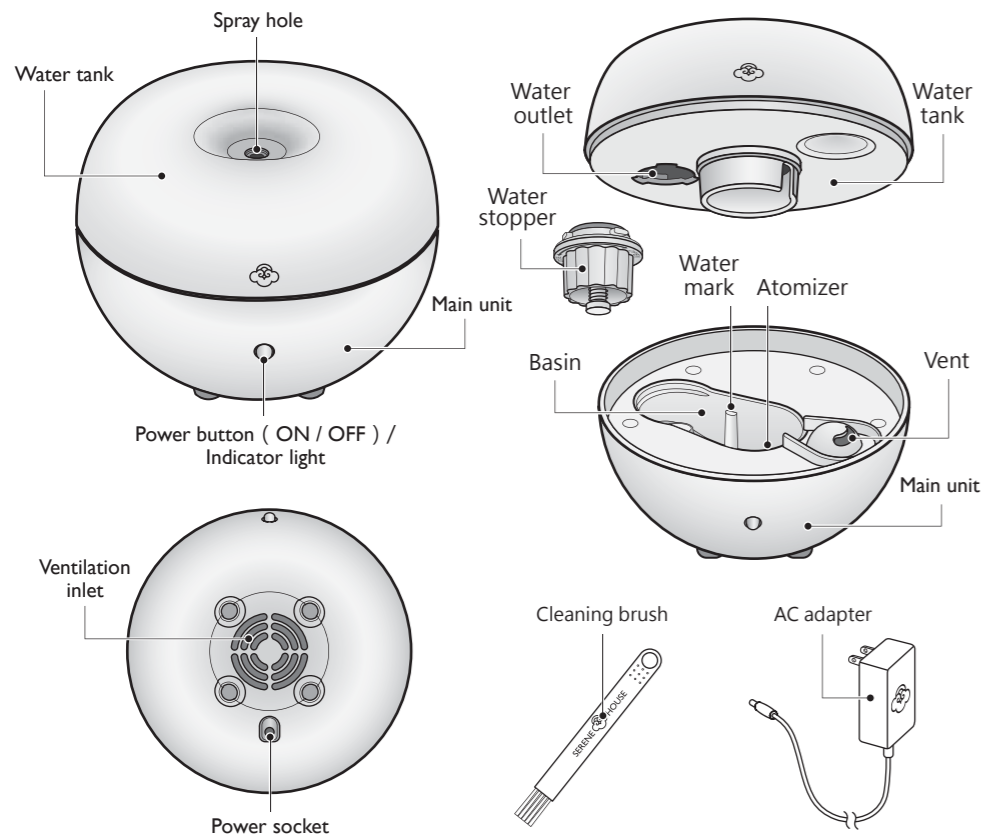




Blob
Scenitizer®
Design by Carsten Jørgensen

Product & Accessories

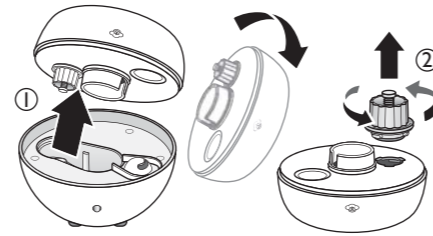
Blob Scenitizer® (121201001 White / 121201002 Black / 121201003 Green / 121201004 Red / 121201005 Blue)
• Please check if all the following items are present and if there is any damage before use.



Operating Instructions

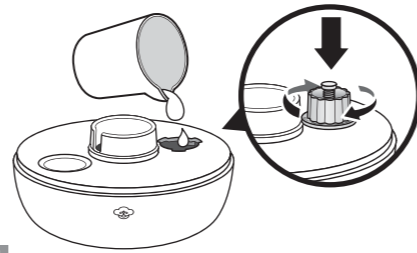
- Always place your Scenitizer® on a firm, flat, and level surface.
- Condensation may occur around the Scenitizer® when operating in high humidity environment.

1



Remove the water tank from the main unit, turn the water tank upside down; the water stopper is located underneath it. Turn to open the water stopper.

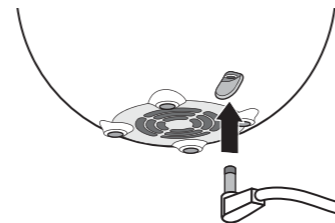
2



Fill the water tank with water until it is full. Place the water stopper back to its water tank outlet and turn to secure the water stopper. Make sure water is not leaking from the water tank when the water stopper is facing downwards.

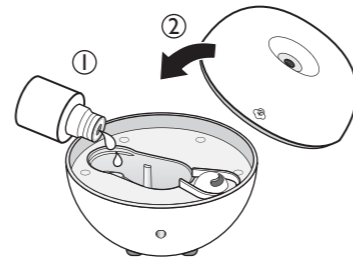
- Fill the water tank with mineral water or filtered water.
- Water should be in room temperature (25°C ~ 40°C) (76.9°F ~ 103.9°F). Do not use water below 25°C (76.9°F)
- Wipe off any excess moisture from the surface of the main unit with a soft cloth.
- Do not add any essential oil into the water tank.

3



Insert the AC adaptor into the power socket of the main unit, as shown in the left diagram.

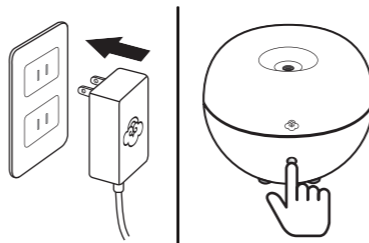
4



Add 5-10 drops of SERENE HOUSE 100% natural essential oil into the basin.

- To add additional oil please turn off the power and detach the adaptor from the main unit. Tip out the water from the basin and add your ideal drops of oil before reattach the water tank. Avoid water get in from the vent otherwise malfunction may occur.

5



Plug the AC adaptor into a power outlet. Press the power button (located at the front of the main unit) to turn the power on. A dim light indicator will light up when the device starts to operate. Press the power button to turn off.

- For safety purpose, this Scenitizer® is programmed to stop operating automatically when it detects the water is empty. Repeat operating steps to restart the device.

6

Please empty the water from the basin when reuse this device. Be sure to clean this Scenitizer® on a regular basis.

- For proper handling and maintenance, please refer to the Cleaning & Maintenance section of this manual.

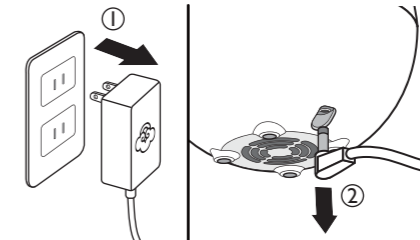
Caution

- NEVER connect the power without covering the water tank.
- Do not remove the water tank or block the ventilation inlet under the main unit during use.
- When the device is in operation, do not touch the atomizer.
- Make sure to pour out the water that has been using for over 24 hours.
- For best performance, we recommend SERENE HOUSE essential oils with this Scenitizer®. Use of other essential oils may cause damage to the device.
- Make sure to wipe clean with a cloth if essential oil drips outside of the basin or on the floor.
- Not recommended to use in a space with high humidity.

Cleaning & Maintenance

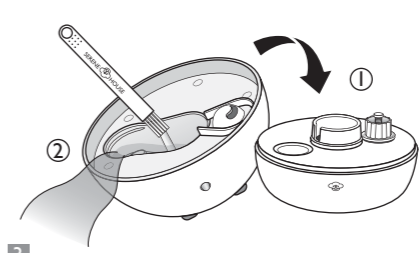
- Always disconnect the AC adapter from the electrical outlet and remove the plug from the main unit before cleaning.
- For best atomizing performance, be sure to clean the Scenitizer® after each use.

1



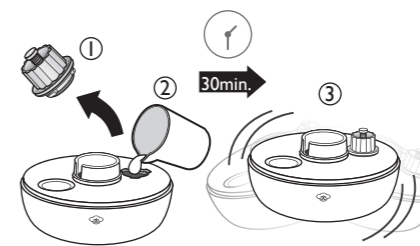
Remove the AC adapter from the electrical outlet and remove the plug from the main unit.

2



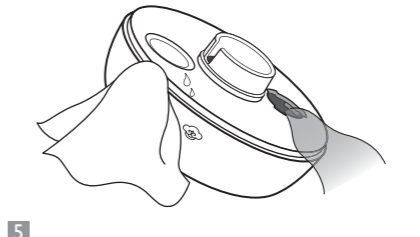
Empty the water in the tank, add a small amount of warm water (do not exceed 40°C) (103.9°F), and a few drops of detergent. Use the cleaning brush provided to clean the atomizer and internal surface of the basin. Gently rinse all the soap out of the basin after wash.

3



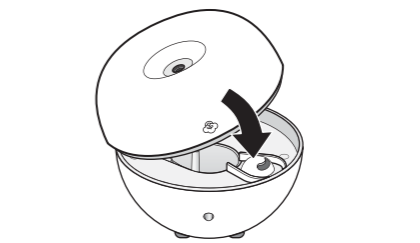
Remove the water stopper from the water tank, pour approximately 5 ml of bleach, fill the water tank with water at approximately 80% and place the water stopper to its water tank. Shake gently then pour out the bleach water out of the water tank. To clean thoroughly, let the bleach water soak in the water tank for 30 minutes with the water outlet facing upwards.

4



Use clean water to rinse the water tank until it is clean. Place the water stopper to its water outlet and wipe clean when finished.

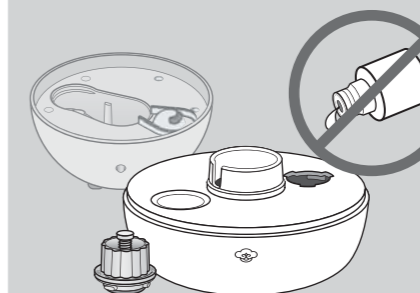
5



Reattach the water tank to the main unit to complete the cleaning and maintenance procedure.

- Never use acidic cleansers as this may cause malfunction.
- If water accidentally flows into the ventilation inlet, vent or ON/OFF switch, please allow internal mechanism to dry through (at least 6 hours) before the next use, otherwise this may cause the device to malfunction.

WARNING








Never add essential oil into the water tank. If essential oil drops into the water tank, clean it immediately by following the Cleaning and Maintenance instructions of this manual.

Safety Precautions

For safety, please be sure to comply with following instructions :

- The precautions listed in this manual are to ensure safe and proper use of this product by the user, and to avoid any danger or loss that might occur to the user or others.
- "WARNING" contains important safety instructions. Be sure to follow these instructions.

! WARNING

	<ul style="list-style-type: none">• Stop using the product immediately and unplug the AC adapter once smoke, smell, unusual sounds or other anomalies occur.
	<ul style="list-style-type: none">• Do not modify, fix, or dismantle this product, as fire, electric shock, or damage may occur.
	<ul style="list-style-type: none">• When the product is at the end of its life, we recommend disposal at a collection point for the recycling of electrical and electronic equipment, rather than with household waste. The symbols on the product, instruction manual and packaging allow for proper sorting and disposal.
	<ul style="list-style-type: none">• KEEP OUT OF REACH OF CHILDREN AND PETS• FOR INDOOR USE ONLY• Please use a DC 24V / 500 mA adapter, otherwise the device may malfunction.• The AC adapter will heat up when the product is operating; this is normal.• Only the included AC adapter may be used with the product, using other AC adapters may result in fire.• Do not connect the AC adapter to the main unit when installing, as electric shock and injury may occur.• The product should always be unplugged and the water tank and basin should always be empty when moving the product or when the product is not in operation.• When unplugging the AC adapter from the outlet, do not pull on the wire, Hold the AC adapter firmly and then unplug it, or else damage or injury may occur.• Please avoid dripping the essential oil onto the exterior of the product or onto furniture. If essential oil dripping accidentally occurs, wipe off immediately to avoid discoloration of the exterior of the product or the furniture.
	<ul style="list-style-type: none">• This product must be disconnected from the electrical outlet before cleaning and maintenance.• Do not handle the main unit and AC adapter with wet hands, or let water or other liquids stick to or spray onto them, as this may result in an electric shock.• Do not use the product when electric cord or plug is damaged or the product has been accidentally hit, dropped, broken, or damaged in any way.• Do not use the product when it has been accidentally dropped, hit, or broken as this may cause the product to short-circuit or malfunction.• Do not bend, heat, or place heavy objects on the power cord as fire or malfunction may occur.• Do not deliberately place your eyes, nose or mouth close to the fragrance mist emitted as this may cause physical discomfort.• Do not place the product on soft surfaces such as carpet, otherwise the ventilation inlet at the bottom may become blocked, causing the device to not function correctly.• This product is not a toy. Do not let children use this product. Keep out of reach of children as electric shock and injury may occur. Children should be properly supervised to ensure that they will not play with this product at all times.• This product is not intended for use by persons (including children) with reduced physical, sensory, or mental capabilities, or lack of experience and knowledge, unless they have been given supervision or instruction concerning use of the product by a person responsible for their safety.• Do not remove the water tank or put your finger or other objects into the basin while the product is in operation as water leakage, injury, or malfunction may occur.• To avoid fire, electric shock, personal injury or product damage, do not place the product in the areas listed below :<ul style="list-style-type: none">* In direct sunlight or next to a heating apparatus.* In dusty places.* On tilted, unstable or uneven surfaces.* Places full of smoke or next to gas stoves.* Places with an ambient temperature of more than 40°C; keep the product away from sources of ignition.* On top of or next to electrics (TVs, stereos, refrigerators, etc) .

Precautions before use

- Please read all instructions before using the product. Use it safely and correctly.
- This product is a vaporized fragrance diffuser and uses ultrasonic vibration technology to generate fragrant vapors.
- Read the "Operating Instructions" section of this manual for correct operation; malfunctions may occur due to improper use.
- Make sure to read and follow the "Cleaning & Maintenance" instructions in this manual for cleaning and maintenance; improper maintenance may cause malfunctions.
- This product is manufactured using the ultrasonic atomization principle, and can only be used for spreading fragrance, it does slightly humidify but it cannot be used on its own as a humidifier.

Notes on the use of essential oil

This Scentilizer® is designed to use only with water and natural essential oil.

For best performance of this Scentilizer®, we recommend using SERENE HOUSE 100% essential oils.

- Essential oils are highly concentrated oils. Use with caution.
- Do not spill the oils as they may damage plastic objects and furniture.
- Children and pets are very sensitive to essential oils. Use with caution.
- Stop using the product and open the windows for ventilation if you start to feel uncomfortable.
- Be sure to use appropriate amounts of essential oil.
- If you have any special physical conditions, such as pregnancy, lung failure, cancer, epilepsy, or other illnesses, please consult your doctor before using essential oils.

Specifications

Product name	Blob	
Model code	121201001 White / 121201002 Black / 121201003 Green 121201004 Red / 121201005 Blue	
Atomization mode	Ultrasound	
Continuous atomization time	> 6 hr	Fragrance results may vary depending on ventilation, temperature, humidity, and the size of space.
Suggested room size	10 ~ 15 m ² (107.6 ~ 161.4 ft ²)	
Ultrasonic frequency (MHz)	2.4 ± 4%	
Water tank capacity	250 ml (8.5 fl. oz.)	
Power input	100 - 240V ~, 50 / 60 Hz, 9W	
Product size	12 cm L x 12 cm W x 9.4 cm H (4.72 in L x 4.72 in W x 3.70 in H)	
Main unit weight	286 g (10.1 oz)	
Operation mode	Continuous mode	
Accessories included	AC adapter, cleaning brush, warranty card.	
Design	Switzerland / Taiwan	
Made in China		

Patent Product

Troubleshooting

If you experienced unsatisfactory operations, please follow our troubleshooting guidelines listed below.

Machine does not operate

- Check the adapter
 - Make sure the adapter is fully and correctly plug into the electrical outlet.
- Power cord not connected to the main unit
 - Be sure plug is inserted into the body socket correctly.
- The power is correctly connected but the device still does not operate
 - Check whether the water tank contains any water and then recheck that the power button is on. Check that the water level in the basin does not exceed the maximum water level line (MAX) ; if this is the case, empty out the excess water.

The product does not atomize or does not atomize effectively

- Check the water type used and water temperature
 - Please use bottled or filtered water between 25°C and 40°C (76.9°F-103.9°F) .
- Residues on atomizer
 - Perform maintenance according to the 'Cleaning & Maintenance' section of this manual.
- Placement of the product
 - Place on a firm level, and stable surface where unaffected by wind.
- Leaking
 - Turn to secure the water stopper. Make sure the logo and power button are aligned when putting the water tank back to the main unit.
- Make sure empty basin before use.



RoHS compliant



Do not attempt to dismantle or repair the product by yourself. If the unit still does not operate satisfactorily, please visit our website www.serenehouse.com, and click link "Support", or contact our customer service.