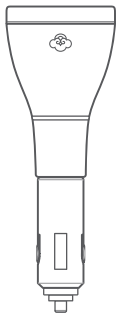


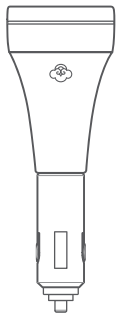
Car Scent Diffuser

- This instruction is suitable for both Jazz and Piper.



Jazz

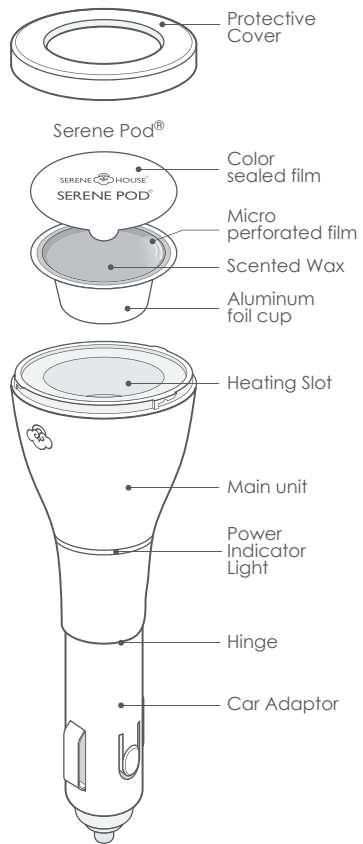
Inspired by the music genre of Jazz, a selection of scented Serene Pod® are like the instrument to harmonize your journey. Use with Serene Pod®.



Piper

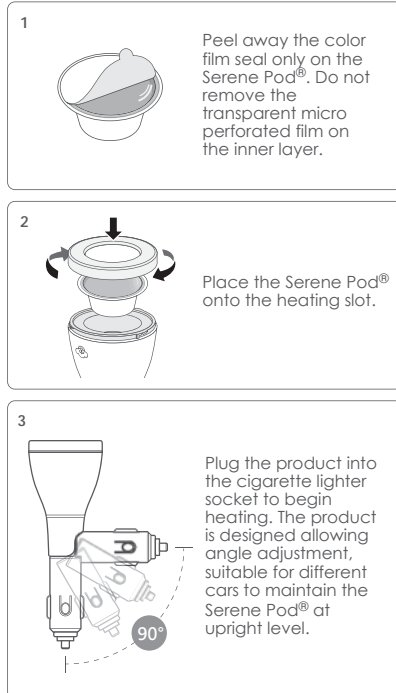
Inspired by music instrument design, Piper orchestrate your favorite scent through the Serene Pod® of your choice. Use with Serene Pod®.

Product & Accessories



Operating Instructions

- Please remove all packaging before use.

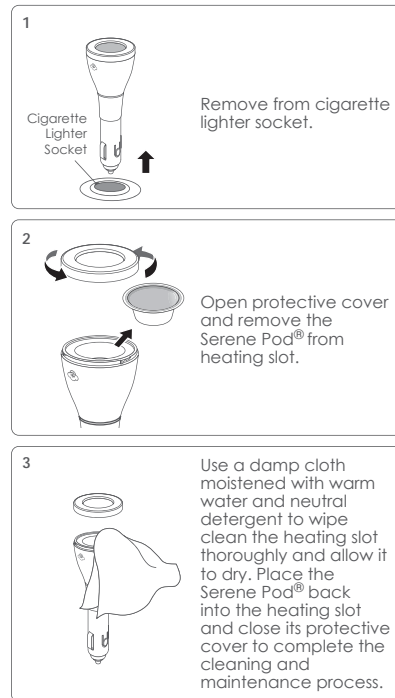


Caution:

- Only a Serene Pod® from SERENE HOUSE can be used with this product; do not heat liquids or other objects in the heating plate.
- The Serene Pod® can be heated repeatedly. If the scent fades or the diffusing performance drops, please consider replacing the Serene Pod®. The Serene Pod® is a consumable item; please contact your local distributor for purchase.
- Always unplug the product from cigarette lighter socket when not in use.

Cleaning & Maintenance

- Always unplug the product from its power source prior to cleaning & maintenance.
- please visit www.serenehouse.com for more information on the distribution near you.



Precautions for Product Cleaning & Maintenance:

- Allow to dry thoroughly before use.
- Never soak or wash this product directly as it may cause mechanical malfunction or danger.
- Never use acidic cleansing agents as it may cause malfunctions to the product.

Specifications

- Fragrance results may vary depending on ventilation, temperature, humidity, and the size of space.

Jazz

Model code : 131205005 White / 131205006 Black
 Suggested space size : For use in standard automobiles
 Power input : DC 12 V / 0.6 A
 Product size : Ø 4.8 cm x 13.5 cm H
 (Ø 1 7/8" in x 5 1/2" in H)
 Main unit weight : 53 g ± 5 % (1.9 oz ± 5 %)
 Operation mode : Thermal Controlled Heating
 Accessories included : Warranty card.
 Designer : Fen-Ju Lin
 Design supervised by : Carsten Jörgensen
 Design : Taiwan
 Made in China

Piper

Model code : 131205007 White / 131205008 Black
 Suggested space size : For use in standard automobiles
 Power input : DC 12 V / 0.6 A
 Product size : Ø 4.65 cm x 13.3 cm H
 (Ø 1 3/4" in x 5 1/4" in H)
 Main unit weight : 52 g ± 5 % (1.8 oz ± 5 %)
 Operation mode : Thermal Controlled Heating
 Accessories included : Warranty card.
 Designer : Fen-Ju Lin
 Design supervised by : Carsten Jörgensen
 Design : Taiwan
 Made in China

Patent Product



Precautions for Use:

- Read the instruction manual before using this product.
- Be sure to handle this product with care to avoid impacts or drops.
- If you have any special physical conditions, such as pregnancy, lung failure, cancer, epilepsy, or other illnesses, please consult your doctor before using essential oils. Stop using the product and open the windows for ventilation if you start to feel uncomfortable.
- Recommend not to shake or use the Serene pod[®] on uneven surface or tilted angle while the wax is in liquid form.



Precautions for Use of Serene Pod[®]

- Do not remove or damage the transparent micro perforated film of the Serene Pod[®] in order to avoid spillage of melted scented wax.
- Please do not touch the Serene Pod[®] when it is being heated to avoid accidental burns.
- Please keep children and pets away from the Serene Pod[®] to prevent accidental ingestion.
- The Serene Pod[®] is not edible; please do not eat it.
- Stop using the product and open the windows for ventilation if you start to feel uncomfortable.
- Replace with a new Serene Pod[®] to ensure best scent ability if the aluminum foil cup of Serene Pod[®] is deformed in any way (including the bottom).
- Keep Serene Pod[®] away from direct sun light.

Safety Precautions

For safety, please be sure to comply with the following instructions :

- The precautions listed in this manual are to ensure safe and proper use of this product by the user, and to avoid any danger or loss that might occur to the user or others.
- "WARNING" contains important safety instructions. Be sure to follow these instructions.



WARNING



- Stop using the product immediately and unplug the device once smoke, smell, unusual sounds or other anomalies occur.



- Do not modify, fix, or dismantle this product, as fire, electric shock, or damage may occur.



- When the product is at the end of its life, we recommend disposal at a collection point for the recycling of electrical and electronic equipment, rather than with household waste. The symbols on the product, instruction manual and packaging allow for proper sorting and disposal.



- This product must be disconnected from the power source when not in use or before cleaning and maintenance.
- After the product is removed from the power source, only remove the Serene Pod[®] for cleaning and maintenance after it has cooled completely.
- Allow the Serene Pod[®] to cool thoroughly into a solid form before handling, cleaning & maintenance.
- To avoid product faulty or potential injuries, Do Not manually alter any parts of the product.



- Stop using the product if it is damaged or ruptured due to impact from an accidental drop.
- When the heating slot does not contain a Serene Pod[®], please do not connect power source. Otherwise product malfunction may occur.
- Do not handle the main unit with wet hands, or let water or other liquids spill onto them, as this may result in electric shocks.
- Do not touch or insert other foreign objects into the heating slot during use. Otherwise injury or product malfunction may occur.
- This product is not a toy. Do not let children use this product. Keep out of reach of children as electric shock and injury may occur. Children should be properly supervised to ensure that they will not play with this product at all times.
- To avoid fire, electric shock, injury or damage, do not place the product in the areas listed below :
 - Environments exposed to direct sunlight to high temperatures, and keep away from sources of ignition.
 - Pressurized objects and combustibles.

Troubleshooting

If you experienced unsatisfactory operations, please follow our troubleshooting guidelines listed below.

Machine does not operate

- Car adaptor is not securely connected to the automobile cigarette lighter socket
→ Please ensure car adaptor is correctly inserted into the automobile cigarette lighter socket.
- Car adaptor has been securely connected but product still does not function properly
→ Please check if the cigarette lighter socket is functioning correctly.

Poor Fragrance Emission

- The scent fades or the transparent micro perforated film is damaged
→ Please replace the Serene Pod[®] with a new one.
- The heating plate is dirty
→ Perform maintenance according to the Cleaning & Maintenance section of this manual.

SERENE  HOUSE[®]

Instruction Manual



Do not attempt to dismantle or repair the product by yourself. If the unit still does not operate satisfactorily, please visit our website www.serenehouse.com, and click link "Support", or contact our customer service.

Serene Pod[®] Car Scent Diffuser

Jazz • Piper